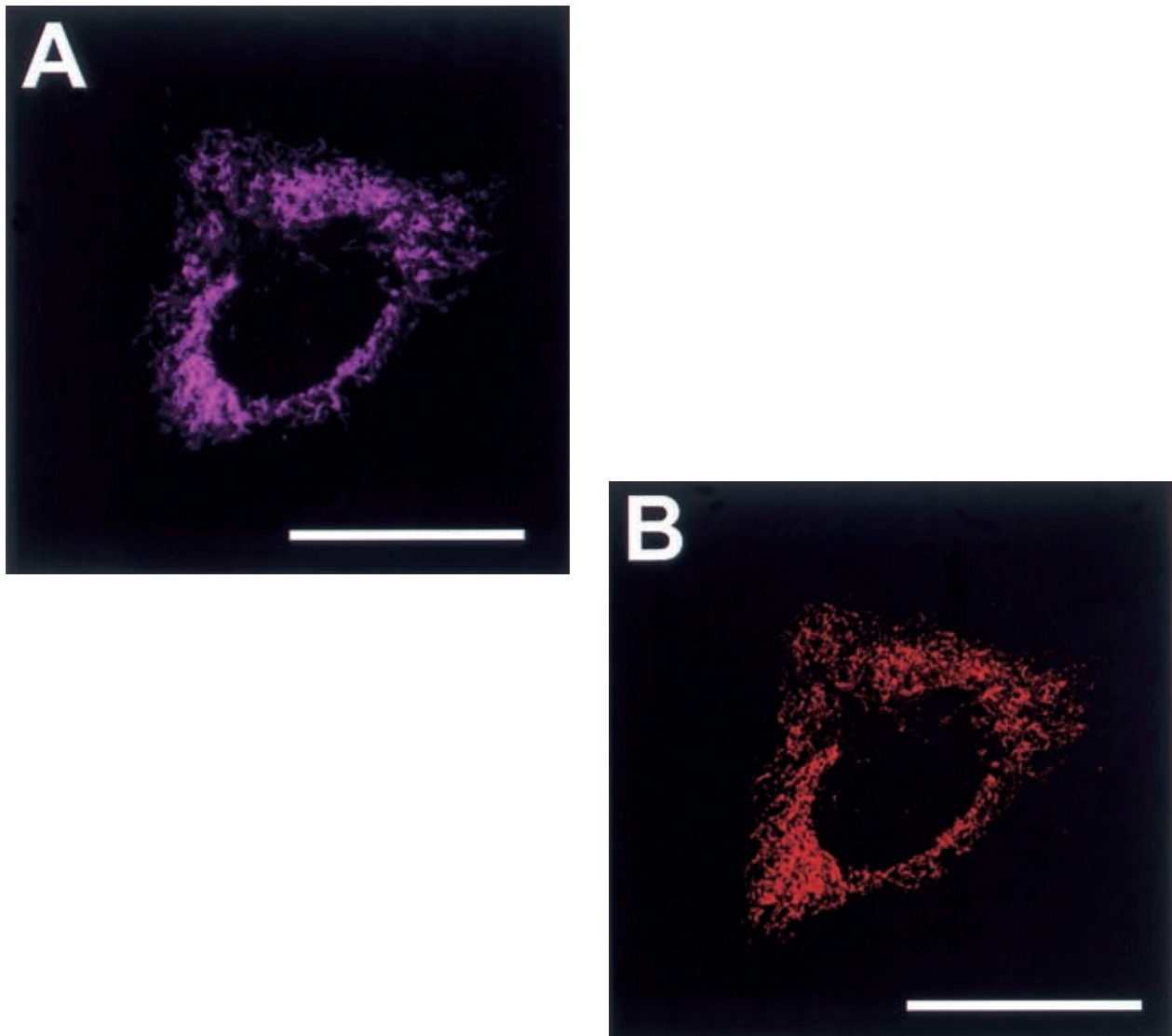


—Photogravure—

## Aggregation of Mitochondria

Toshiyuki Aokage, Ikuroh Ohsawa and Shigeo Ohta

Department of Biochemistry and Cell Biology, Institute of Gerontology, Nippon Medical School



Mitochondrial aggregation induced by co-expression of Green Fluorescent Protein (GFP) and an anti-apoptotic factor Bcl-x<sub>L</sub>. HeLa cells were co-transfected with cDNA of Bcl-x<sub>L</sub> and empty control vector (A and B) or GFP (C, D and E). The cells were double-stained with antibody against Bcl-x<sub>L</sub> (A and C) and a mitochondria specific fluorescent dye, MitoTracker Red (B, D and E). E: Higher-magnification of aggregated mitochondria. Note that green fluorescence in D and E is derived from GFP and that the aggregated mitochondria were gathered but not fused (E). Scale bars, 20  $\mu$ m (A~D) and 10  $\mu$ m (E). (Pictures were modified from those that were published in Biochemical and Biophysical Research Communications 314, 711–716 (2004). Aokage et al.).

