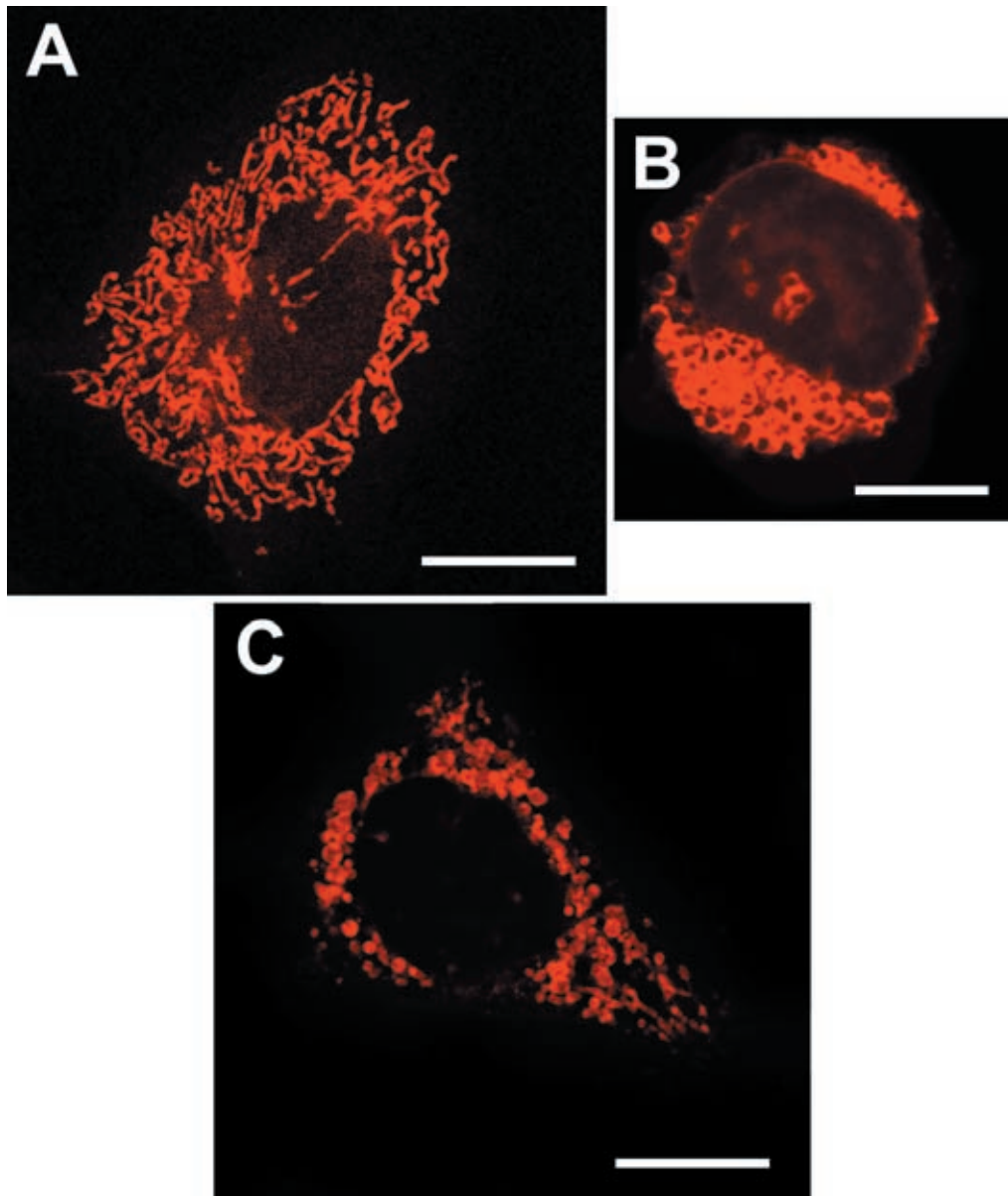


—Photogravure—

## Various Morphologies of Mitochondria

Ikuroh Ohsawa, Toshiyuki Aokage and Shigeo Ohta

Department of Biochemistry and Cell Biology, Institute of Gerontology, Nippon Medical School



Living human culture cells were stained with a mitochondria specific fluorescent dye, MitoTracker Red. (A) a HeLa cell (B) a Jurkat cell (C) a cybrid cell that contains the HeLa nucleus and mitochondria with pathogenic mutant mitochondrial DNA (mtDNA) from a patient with mitochondrial disease. Bars, 20  $\mu$ m.

Note that mitochondrial morphology depends on the nucleus that determines a cell-type (compare A with B) and mtDNA (compare A with C). The HeLa nucleus is common in A and C, but their mtDNAs are different from each other. The pathogenic mutation in mtDNA leads to swollen and spherical structures (C).