

Normative Data and Predictive Equation of Interrupter Airway Resistance in Preschool Children in Japan

Takehide Imai and Masato Takase

Department of Pediatrics, Nippon Medical School Tama Nagayama Hospital

Measurement of interrupter airway resistance (R_{int}) is a convenient alternative to standard spirometry for assessing respiratory function in uncooperative young children. The aim of the present prospective study was to establish the normative data and predictive equation of R_{int} in Japanese preschool children. A total of 214 children were enrolled from a single kindergarten; however, 129 were excluded because they met at least 1 of the exclusion criteria, such as wheezing history or recent common cold. Expiratory R_{int} values were assessed in 85 of the children, but technically unsatisfactory measurements were obtained in 5 of them. Thus, 80 healthy Japanese children (39 boys and 41 girls) without any history or symptoms of respiratory tract diseases were evaluated. Their age, body height, and body weight ranges (median) were 1.67 to 6.42 (4.38) years, 79.8 to 120.9 (102.5) cm, and 10.4 to 24.9 (15.8) kg, respectively. The mean R_{int} was 0.93 ± 0.25 kPa/L/s (range=0.46–1.49 kPa/L/s). The R_{int} tended to decrease with increasing age and body height ($r=-0.65$; $P<0.01$), but sex played no significant role ($P=0.71$). The predictive equation based on body height derived by linear regression was expiratory R_{int} (kPa/L/s)= $2.513-0.01567 \times$ body height (cm) (multiple correlation coefficient=0.653). Because 79 of the 80 measured R_{int} values were within 140% of the predictive R_{int} value, we calculated a 140% cut-off for predicting bronchoconstriction. Our results provide a reference value for evaluating the degree of airway obstruction in young Japanese children. (J Nippon Med Sch 2015; 82: 180–185)

Key words: respiratory function tests, airway resistance, logistic models, predictive equation

Introduction

Respiratory function tests are essential for evaluating lung function in children with confirmed or suspected respiratory tract diseases¹. The most commonly used method is standard spirometry, which provides information based on the forced expiratory flow-volume curve. Six conditions are needed to receive acceptable results from spirometry: instantaneous start of exhalation, rapid rise in flow to peak flow, sharp peak early in exhalation, smooth continuous fall in flow without interruptions, gradual fall in low flow area, and reproducible shape standard². Therefore, standard spirometry cannot be performed in young children because little cooperation can be expected for this age³.

For those children, an alternative technique is airway resistance measurement. Airway resistance enhances the degree of obstruction in the respiratory tract during

spontaneous tidal breathing without cooperative effort. One method to measure airway resistance is the interrupter technique⁴.

The purpose of the present prospective study was to establish the normative data and predictive equation of interrupter airway resistance (R_{int}) in Japanese preschool children.

Subjects and Methods

Subjects

The subjects were recruited from a single suburban kindergarten in Tokyo in October and November 2005. Children were excluded if they had had symptoms of respiratory tract diseases for at least 1 previous month. Also excluded were children with a history of significant respiratory tract disease (severe pneumonia or respiratory failure), chronic respiratory disease (bronchial

Correspondence to Masato Takase, Department of Pediatrics, Nippon Medical School Tama Nagayama Hospital, 1-7-1 Nagayama, Tama, Tokyo 206-8512, Japan

E-mail: mtakase@nms.ac.jp

Journal Website (<http://www.nms.ac.jp/jnms/>)

Table 1 Clinical Data (mean±SD, range) of the Subjects

Variable	Total (n=80)	Boys (n=39)	Girls (n=41)	P
Age (years)	4.22±1.37 (2.33–6.33)	4.17±1.57 (1.57–6.42)	4.28±1.17 (1.57–6.42)	0.19
Body height (cm)	101.3±10.4 (83.4–118.8)	100.8±11.3 (79.8–120.9)	101.7±9.5 (79.8–120.9)	0.27
Body weight (kg)	15.7±3.0 (10.4–21.8)	15.8±3.2 (10.4–24.9)	15.5±2.9 (10.4–24.9)	0.40
R _{int} (kPa/L/s)	0.93±0.25 (0.46–1.49)	0.92±0.25 (0.46–1.48)	0.94±0.25 (0.53–1.49)	0.71

$P < 0.05$ was considered significant according to the Student's *t*-test.

80 children, 39 boys and 41 girls, were analyzed. Their age range (median) was 1.67 to 6.42 (4.38) years. Their body height ranged from 79.8 to 120.9 cm (median=102.5 cm) and body weight ranged from 10.4 to 24.9 kg (median=15.8 kg). The mean R_{int} was 0.93±0.25 kPa/L/s (range=0.46–1.49 kPa/L/s). No significant differences were detected between boys and girls.

asthma, 3 or more episodes of wheezing, or bronchopulmonary dysplasia), anatomical abnormalities of the respiratory tract, congenital or acquired cardiac illness, neuromuscular disease, or other significant systemic disease.

The research protocol was reviewed and approved by the institutional ethics committee. Written informed consent was obtained from the parents of the participating children.

Measurement Protocol

The R_{int} during expiration was measured with MicroR-int[®] device for pulmonary function testing (Micro Medical Ltd., Gillingham, UK). Mouth pressure (P_{mo}) was evaluated after a brief interruption in airflow (V'), and R_{int} was calculated as P_{mo}/V'^{5.6}. For standardized measurement, the subjects were seated upright by themselves or on an assistant's lap in a familiar and quiet room. They were instructed to breathe quietly through the mouth into a rubber facemask or mouthpiece while the neck was slightly extended and the cheeks and chin were supported. The median value of 5 sequential and technically satisfactory measurements was calculated. Measurements during irregular breathing, tachypnea, or mouthpiece leakage were rejected. Also rejected were tracings not showing the timing of airflow interruption and those with horizontal or declining pressure signals, suggesting mouthpiece leakage or altered breathing. Micro Medical became a brand of CareFusion Corporation, which was headquartered in San Diego, CA, USA. Recently, CareFusion Corporation merged with Becton, Dickinson and Company (Franklin Lakes, NJ, USA).

Statistical Analysis

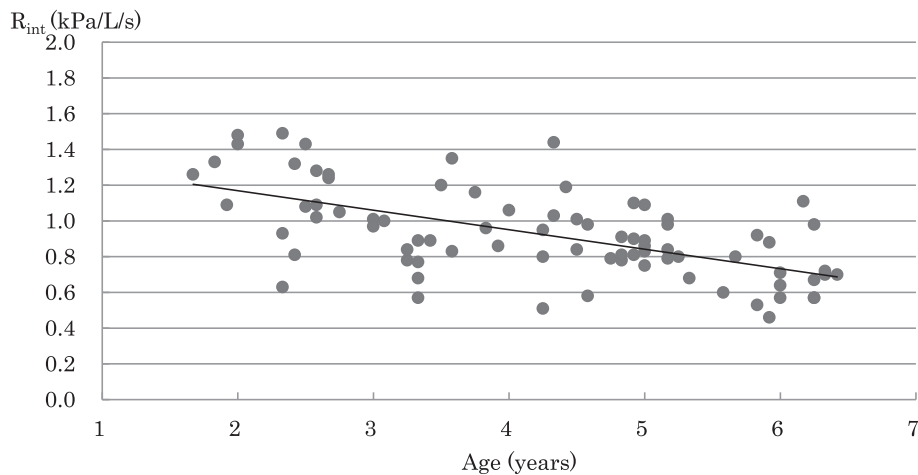
Student's *t*-test was used to compare boys and girls.

Pearson correlation coefficients were calculated to assess the associations of R_{int} with age, body height, and body weight. The reproducibility of measurements within subjects was estimated by the within-subject coefficient of variation (CVw), which was calculated from the standard deviation (SD) of 5 sequentially obtained R_{int} values divided by the mean R_{int} values in each subject. Linear regression was used to derive the predictive equation of R_{int}. Data are presented as the mean±SD or median and range. The $P < 0.05$ was considered significant.

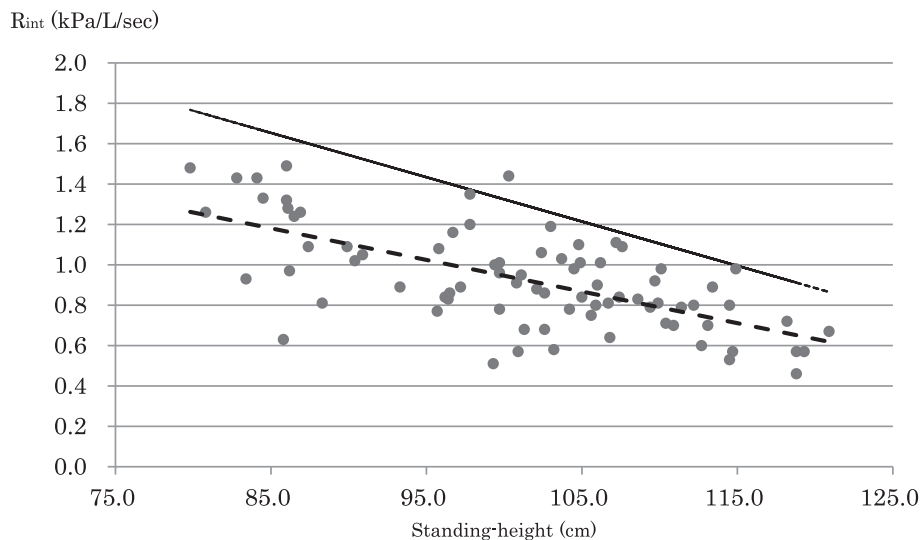
Results

General Findings

Of the 214 children examined, 129 met at least one exclusion criterion or did not have their parents' consent. Therefore, R_{int} values were measured in 85 children; however, in 5 children with a facemask 5 sequential and technically satisfactory measurements failed to be completed. Thus, measurements were completed and data were analyzed in 80 children (39 boys and 41 girls). Among the 80 children the age range was 1.67 to 6.42 years (median=4.38 years). the body height range was 79.8 to 120.9 cm (median=102.5 cm), and the body weight range was 10.4 to 24.9 kg (median=15.8 kg). The R_{int} measurements were completed with a facemask in 69 children and with a mouthpiece in 11 children (age range=4.50–6.25 years; R_{int} values=0.57 to 0.91 kPa/L/s). The R_{int} values of age-matched children who underwent measurements with a mouthpiece or a facemask did not differ significantly ($p = 0.76$, data not shown). Thus, all 80 R_{int} values were defined as a single group. The mean R_{int} was 0.93±0.25 kPa/L/s (range=0.46–1.49 kPa/L/s). The R_{int} values did not differ significantly between boys and girls (Table 1). The

Fig. 1 R_{int} distribution by age

Scatter plot illustrating the measured R_{int} according to subject age. The solid line indicates the calculated regression line of the predicted R_{int} .

Fig. 2 R_{int} distribution by height

Scatter plot illustrating the measured R_{int} according to subject height. The dashed line indicates the predicted R_{int} based on the standing height, and the solid line represents 140% of the predicted values.

5 children in whom the measurements failed to be completed ranged from 1.6 to 4.9 years, and 3 of the 5 children were boys. The major factor for incomplete measurement was unable to accept facemask.

The reproducibility of 5 sequential measurements in 80 children was calculated as 17.1%, which was the mean value of CVw (range=4.8% to 52.8%). The CVw showed significant but weak correlation with age ($p < 0.05$, $r = -0.3$).

Correlation between R_{int} and Independent Variables

The R_{int} tended to decrease with increasing age (Fig. 1) and body height (Fig. 2). Significant linear relationships were noted between R_{int} and age ($r = -0.599$), body height

($r = -0.653$), and body weight ($r = -0.608$, $P < 0.01$).

Predictive Equation of R_{int}

Because body weight ($r = 0.931$) and age ($r = 0.920$) were highly correlated with body height, only body height was used as the explanatory variable in logistic regression. The derived first-degree polynomial equation was expiratory R_{int} (kPa/L/s) = $2.513 - 0.01567 \times$ body height (cm). The multiple correlation coefficient (R^2) was 0.653, indicating a significant but slightly weak correlation between the explanatory and the dependent variables. The second-degree polynomial equation was expiratory $R_{int} = 3.2355 - 0.03028 \times$ body height (cm) + $0.0000731 \times$ body height (cm). The R^2 of the second-degree polynomial equation

was 0.654 and similar to that of the first-degree polynomial equation. Therefore, the first-degree polynomial equation was adopted as the predictive equation of R_{int} based on body height. To evaluate long-term repeatability, R_{int} values were again measured in 64 children the following year. Comparing their measured R_{int} value with the predictive value based on their body height, the correlation coefficient was 0.52 ($p < 0.01$).

Discussion

The interrupter technique was developed as an alternative respiratory function test for patients in whom standard spirometry is difficult, such as awake young children. The R_{int} measurement requires no effort, is minimally invasive, and requires minimal co-operation. Therefore, measuring R_{int} it is a potential method for assessing airway obstruction in preschool children.

Direct measurement of airway resistance (R_{aw}) is traditionally performed with whole-body plethysmography. The R_{aw} is calculated from the ratio of change in alveolar pressure (P_{alv}) and oral airflow. In contrast, the interrupter technique is based on the assumption that during transient occlusion of the airway at the mouth, P_{alv} will equilibrate rapidly with P_{mo}. Therefore, R_{int} can be calculated from the ratio of P_{mo} (measured immediately after occlusion) to airflow (measured just before occlusion). To measure R_{int} with MicroRint[®] device for pulmonary function testing, adequate cheek support and acceptance of a facemask or mouthpiece with a noseclip are essential. The measurement of R_{int} fails mainly because of nonacceptance of the facemask, especially by younger children⁷.

The present study is, to our knowledge, the first to measure expiratory R_{int} in healthy Japanese preschool children. Since 2005, the physiques of Japanese children have not altered; thus, our data are applicable to the present day, and the measurement devices now used are similar to those used in 2005. In the present study, R_{int} measurements were able to be completed in most children, as reported previously⁸. As in another previous study, no significant sex differences were detected with the measured R_{int} values⁹.

The R_{int} of preschool children has been reported in several Japanese studies^{10,11}. Kazuma¹⁰ measured R_{int} in 62 preschool children without asthma (aged 5 months to 5 years), in 71 children with asthma (aged 7 months to 5 years) 10 to 15 minutes after salbutamol inhalation (0.01 mg/kg/dose) during symptom exacerbation, and in 57 children with asthma (aged 10 months to 5 years) who

were asymptomatic for at least 2 weeks. The mean R_{int} of these groups was 0.85±0.45, 1.47±0.8, and 0.81±0.28 kPa/L/s, respectively. The mean R_{int} in the present study (0.93±0.25 kPa/L/s) was similar to the control values in the study by Kazuma.

Watanabe¹¹ derived the predictive equation of R_{int} from the body height of 72 healthy preschool children. The equation in these children was R_{int}=2.6147–0.0152×body height (cm) and yielded consistently higher values than the present predictive equation. The predictive equation derived by Saito¹² for children with asymptomatic bronchial asthma for at least 2 weeks is R_{int}=1.8525–0.0109×body height (cm). The regression coefficient ($R^2=0.2242$) was poorer than that of the present study ($R^2=0.653$)¹². The R_{int} showed inverse relationships with body height, age, and body weight, in the present study. Therefore, the predictive equation also showed an inverse relationship, similar to previous reports^{8,13}. The relationship can be explained by increasing airway dimensions and is consistent with the reported reference equations of airway resistance measured by plethysmography¹⁴.

Respiratory resistance usually increases in the presence of lower respiratory infection or asthmatic symptoms. Thus, to validate our predictive equation, the number of outliers was evaluated. The ratio between the measured and predicted R_{int} was plotted according to body height (**Fig. 3**). The standard deviation of the ratio was 0.20 (20.0%), and +2 SD was 140%, which was designated as the cut-off value for outliers. Based on this cut-off, 1 of 80 subjects was an outlier. If the measured R_{int} value exceeded 140% of the predicted R_{int} according to body height, then the respiratory resistance was considered to have significantly increased (**Fig. 2**). On the other hand, 2 of the 80 subjects had less than 60% of the predicted R_{int}. These perhaps indicated poor measurement of pressure change in the mouth at the shutter closing (brief interruption in airflow) because of inadequate cheek support (**Fig. 3**).

A study by Nakade et al.¹⁵ included 1,536 healthy Japanese adults aged 21 to 80 years and 33 patients with newly diagnosed asthmatic aged 18 to 80 years and found that the measured R_{int} value was inversely correlated with body height (141–180 cm). The measured R_{int} value is minimally invasive, requires minimal patient co-operation, and is simple to perform, but the significant difference in the measured and predicted R_{int} values between adults and children reflects the reproducibility of the results. Thus, in the study of adults conducted by Nakade et al., a 120% cut-off appeared to be a useful in-

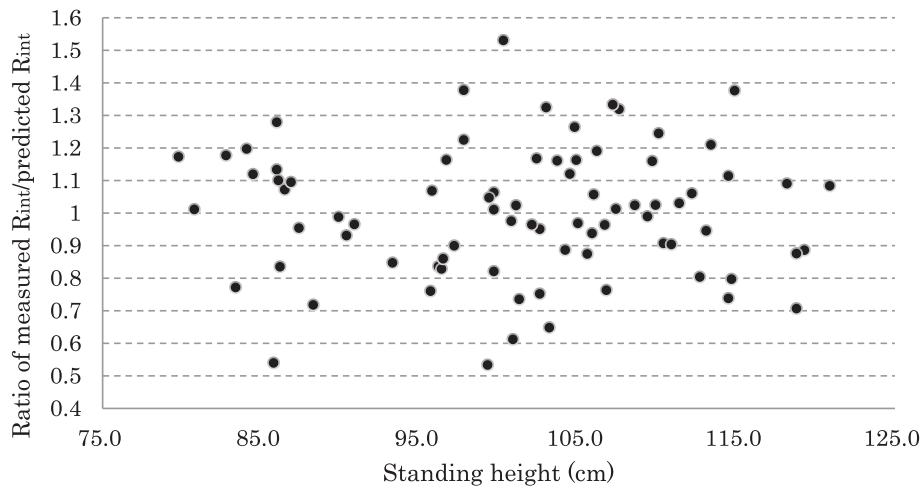


Fig. 3 Ratio of measured R_{int} /predicted R_{int} by height

Scatter plot illustrating the ratio of the measured R_{int} /predicted R_{int} according to subject height. The standard deviation (SD) of the ratio was 0.20 (20.0%); thus, +2 SD was calculated as 140%. The cut-off for outliers was designated as >140%, and with this standard, 1 of 80 total subjects was an outlier.

indicator for screening for asthma. However, in preschool children, we calculated a 140% cut-off for predicting bronchoconstriction.

Predictive equations of R_{int} based on body height have also been reported in other countries. The equation derived by Lombardi et al.⁸ from 284 healthy Italian white children aged 3.0 to 6.4 years is $2.126878 - 0.012538 \times \text{body height (cm)}$. Merkus et al.¹⁶ examined 208 healthy Dutch white children aged 3 to 13 years and arrived at $R_{int} = 1.927 - 0.00992 \times \text{body height (cm)}$. The present predictive equation is similar to those reported in the Italian and Dutch studies.

With regard to ethnic groups, McKenzie et al.¹⁷ found no significant differences in R_{int} among white, African-Caribbean, and Bangladeshi people in east London. Son et al.¹⁸ reported a mean R_{int} of 1.78 ± 0.71 and 1.72 ± 0.73 kPa/L/s in 3-year-old Korean boys and girls, respectively. For boys and girls with a body height of 96 to 100 cm, the mean R_{int} was 1.54 ± 0.49 and 1.71 ± 0.77 kPa/L/s, respectively. Based on our predictive equation, the predicted R_{int} at a body height of 100 cm was 0.946 kPa/L/s, indicating -1.21 SD for boys and -0.99 SD for girls for the Korean result. These differences despite the same race can be explained by differences in the measuring device (Microlab 4000) or the size of the trunk¹⁹.

Respiratory resistance can also be measured with impulse oscillometry (IOS), in which a forced oscillation technique is used to apply mixed frequency, rectangular pressure impulses to the airways. Total airway resistance increases at 5 Hz (R_5) because these low-frequency oscil-

lations (5–15 Hz) are transmitted to the peripheral airway. The measured R_{int} also increases the total airway resistance. Klug et al.⁷ found that in 120 subjects aged 2 to 7 years the R_5 was 1.29 ± 0.22 kPa/L/s (mean \pm SD) and the R_{int} was 0.99 ± 0.19 kPa/L/s.

Study Limitations

The examined children of the present study were recruited from a single kindergarten and sample size was small. To validate our predictive equation for universal use, the favorable number of subjects would be estimated approximately 260²⁰, and additional investigations in preschool children of other Japanese cities are needed. In addition, passive smoking exposure was not evaluated during the study period. Passive smoking can decrease pulmonary function; therefore, to eliminate this factor, more detailed subject recruitment is recommended in future studies.

Conclusions

Healthy Japanese preschool children show no significant difference in R_{int} between sexes. Body height is the best predictor of R_{int} . Notably, R_{int} may not differ significantly among children of different races. The study confirms the feasibility of R_{int} measurement in young Japanese children, especially those with lower respiratory tract infection or asthma. Furthermore, R_{int} would also enable comparisons with exhaled nitric oxide concentration and lung sound analysis.

Acknowledgement: The authors are grateful to all the chil-

dren, parents, and personnel who participated and contributed in this study.

Conflict of Interest: The authors declare no conflict of interest.

References

- Pellegrino R, Viegi G, Brusasco V, Crapo RO, Burgos F, Casaburi R, van der Grinten CP, Gustafsson P, Hankinson J, Jensen R, Johnson DC, MacIntyre N, McKay R, Miller MR, Navajas D, Pedersen OF, Wanger J: Interpretative strategies for lung function tests. *Eur Respir J* 2005; 26: 948-968.
- Miller MR, Hankinson J, Brusasco V, Burgos F, Casaburi R, Coates A, Crapo R, Enright P, van der Grinten CP, Gustafsson P, Jensen R, Johnson DC, MacIntyre N, McKay R, Navajas D, Pedersen OF, Pellegrino R, Viegi G, Wanger J; ATS/ERS Task Force: Standardisation of spirometry. *Eur Respir J* 2005; 26: 319-338.
- Beydon N, Davis SD, Lombardi E, Allen JL, Arets HG, Aurora P, Bisgaard H, Davis GM, Ducharme FM, Eigen H, Gappa M, Gaultier C, Gustafsson PM, Hall GL, Hantos Z, Healy MJ, Jones MH, Klug B, Lødrup Carlsen KC, McKenzie SA, Marchal F, Mayer OH, Merkus PJ, Morris MG, Oostveen E, Pillow JJ, Seddon PC, Silverman M, Sly PD, Stocks J, Tepper RS, Vilozni D, Wilson NM; American Thoracic Society/European Respiratory Society Working Group on Infant and Young Children Pulmonary Function Testing: An Official American Thoracic Society/European Respiratory Society Statement: Pulmonary Function Testing in Preschool Children. *Am J Respir Crit Care Med* 2007; 175: 1304-1345.
- Child F: The measurement of airways resistance using the interrupter technique (Rint). *Paediatr Respir Rev* 2005; 6: 273-277.
- Carter ER, Stecenko AA, Pollock BH, Jaeger MJ: Evaluation of the interrupter technique for the use of assessing airway obstruction in children. *Pediatr Pulmonol* 1994; 17: 211-217.
- Phagoo SB, Wilson NM, Silverman M: Evaluation of a new interrupter device for measuring bronchial responsiveness and the response to bronchodilator in 3 year old children. *Eur Respir J* 1996; 9: 1374-1380.
- Klug B, Bisgaard H: Specific airway resistance, interrupter resistance, and respiratory impedance in healthy children aged 2-7 years. *Pediatr Pulmonol* 1998; 25: 322-331.
- Lombardi E, Sly PD, Concutelli G, Novembre E, Veneruso G, Frongia G, Bernardini R, Vierucci A: Reference values of interrupter respiratory resistance in healthy preschool white children. *Thorax* 2001; 56: 691-695.
- Hagiwara S, Mochizuki H, Muramatsu R, Koyama H, Yagi H, Nishida Y, Kobayashi T, Sakamoto N, Takizawa T, Arakawa H: Reference values for Japanese children's respiratory resistance using the LMS method. *Allergol Int* 2014; 63: 113-119.
- Kazuma N: Interrupter Technique for Measurement of Respiratory Resistance in Preschool Children with Asthma. *J Jpn Pediatr Soc* 2005; 109: 38-42(in Japanese).
- Watanabe M: Prediction equation of Rint values for the healthy pre-school children. In 46th annual conference of the Japanese Journal of Pediatric Allergy and Clinical Immunology, 2009; pp 545.
- Saito N: Prediction Equation of Airway Resistance in Japanese Children based on Measured Values Obtained from Children with well-controlled Bronchial Asthma. *Jpn J Pediatr Allergy Clin Immunol* 2010; 24: 143-150.
- Luginbuehl M, Bradley-Klug K, Ferron J, Anderson WM, Benbadis SR: Pediatric Sleep Disorders: Validation of the Sleep Disorders Inventory for Students. *School Psychol Rev* 2008; 37: 409-431.
- Merkus PJFM, Mijnsbergen JY, Hop WC, de Jongste JC: Interrupter Resistance in Preschool Children. *Am J Respir Crit Care Med* 2001; 163: 1350-1355.
- Nakade Y, Fujimura M, Ohkura N, Okuizumi Y, Nakatas M, Nanbu Y, Oe H, Horita H, Sakai Y, Wada T: Prediction formula for interrupter respiratory resistance in healthy Japanese adults. *Rinsho Byori* 2012; 60: 725-733.
- Merkus PJ, Arets HG, Joosten T, Siero A, Brouha M, Mijnsbergen JY, de Jongste JC, van der Ent CK: Measurements of interrupter resistance: reference values for children 3-13 yrs of age. *Eur Respir J* 2002; 20: 907-911.
- McKenzie SA, Chan E, Dundas I, Bridge PD, Pao CS, Mylonopoulou M, Healy MJ: Airway resistance measured by the interrupter technique: normative data for 2-10 year olds of three ethnicities. *Arch Dis Child* 2002; 87: 248-251.
- Son Bk, Lim DH, Kim JH: Normal Predicted Value of Airway Resistance by Flow Interrupter Technique in Korean Kindergarden Children. *Pediatr Allergy Respir Dis* 1998; 8: 198-204.
- Song DJ, Woo CH, Kang H, Kim HJ, Choung JT: Applicability of interrupter resistance measurements for evaluation of exercise-induced bronchoconstriction in children. *Pediatr Pulmonol* 2006; 41: 228-233.
- Röhrig B, du Prel J-B, Wachtlin D, Kwiecień R, Blettner M: Sample Size Calculation in Clinical Trials: Part 13 of a Series on Evaluation of Scientific Publications. *Dtsch Arztebl Int* 2010; 107: 552-556.

(Received, January 19, 2015)

(Accepted, May 8, 2015)